

# DELAWARE GENEALOGICAL SOCIETY JOURNAL



## Contents

Foreword.....	1
The Delaware Genealogical Society .....	2
Newark Union Church .....	3
Licenses to Import & Export Slaves .....	8
Newark Union Cemetery Inscriptions .....	13
Asbury Methodist Cemetery, Wilmington .....	18

Volume 1

Number 1

October 1980

# Delaware Genealogical Society

## 1979 Officers and Governors

Mr. William B. Neal, President      Mr. Robert Grant Lewis, Vice President

Mrs. Archie G. Sparks, Secretary      Donn Devine, Esq., Treasurer

Board of Governors

Mr. Harry A. Diehl, Mrs. Eileen Derrick, Mrs. Barbara McEwing, Mr. Edward E. Gray, Mrs. Juanelle Crump, and Mrs. Georgiana Rutherford, newsletter editor.

## 1980 Officers and Governors

Mr. William B. Neal, President      Mr. Robert Grant Lewis, Vice President

Mrs. Mary Fallon Richards, Secretary      Mr. Edward E. Gray Treasurer

Board of Governors

Mr. Harry A. Diehl, Mrs. Eileen Derrick, Mrs. Barbara McEwing, Donn Devine, Esq., Mrs. Juanelle Crump, and Mrs. Georgiana Rutherford, newsletter editor.

## Committee on Publications

Donn Devine, Esq., Chairman

Mrs. Barbara McEwing

Mrs. Mary Fallon Richards

Mrs. Archie G. Sparks

Published by the Delaware Genealogical Society, 505 Market Street Mall, Wilmington, Delaware 19801. Subscription to the Journal, \$12 per volume of four issues. Membership in the Society, \$5 per calendar year; family membership \$9; contributing membership \$10 and over.

© 1982-DELAWARE GENEALOGICAL SOCIETY

# DELAWARE GENEALOGICAL SOCIETY JOURNAL

Vol. 1 No. 1

October 1980

## Foreword

The resurgence of interest in genealogy that followed the television presentation of "Roots" three years ago has been widely recognized. Less well known, but equally important, has been the growing interest in local and family history among professional historians, and in Delaware, new efforts by both professional and avocational historians to study and interpret previously neglected source material.

A new journal that will make this research more widely available should be helpful to all who have an interest in local and family history generally, as well as to those who share a particular interest in Delaware.

The Delaware Genealogical Society has set two objectives for its Journal—first, the compilation and publication of original source material for Delaware genealogy and family history, such as church, cemetery, land, census and vital records, and second, the publication of papers reflecting original research into Delaware family and local history.

Its publication by a society whose members for the most part are not engaged in historical or genealogical research as a profession should help reinforce the growing recognition that professional and amateur researchers have much to offer each other, and that the disciplines of both history and genealogy can benefit from their cooperative efforts.

A number of studies into previously neglected areas of local history in Delaware are already under way. It is hoped that publication of the Delaware Genealogical Society Journal will spur further work by professionals and amateurs alike, and at the same time encourage those already at work in areas within the Journal's scope.

Articles and papers based on original research into Delaware family history, local history of genealogical interest, and genealogies for Delaware families before 1850 are particularly welcome. For genealogy, standard American style should be used, with footnotes double-spaced on sheets separate from the text. In other matters, the latest edition of *A Manual of Style* (Chicago: University of Chicago Press) should be consulted.

## The Delaware Genealogical Society

The Delaware Genealogical Society was organized under the auspices of the Historical Society of Delaware in October 1977, after a year of surveying researchers using the Historical Society library about their interests and needs.

The first meeting of what was then called the Genealogy Club of the Historical Society was held on October 18, 1977. A large and enthusiastic group heard Ms. Elizabeth Moyne describe research at the Hall of Records in Dover, and Mrs. Gladys M. Coghlan, director of libraries for the Historical Society, describe the Society's collections, including the Marguerite du Pont de Villiers Boden Genealogy collection.

At the second meeting on February 21, 1978, Mrs. Coghlan spoke on the various immigrations to the East Coast, and the library's resources for research on them. On April 18, 1978, Mrs. Barbara Y. McEwing described research on ancestors in Europe.

In May, with about 70 people in attendance, the group voted to change its name to "Delaware Genealogical Society," and Barbara Y. McEwing, Juanelle M. Crump, Louanne Baratte and Eileen Derrick were elected to serve as an executive committee. Harry Diehl spoke on Pennsylvania German immigration and locations of records for research into it.

The first of the Society's popular and successful all-day workshops was held on June 3, 1978, with John Platt, librarian of the Historical Society of Pennsylvania, as featured speaker; most of the day was free for individual research, with librarians and member genealogists available to assist.

Under the direction of the executive committee, annual dues were established, a full program of meetings and workshops was scheduled for the 1978-79 year, and a constitution and by-laws adopted. Officers and a board of governors were elected in May 1979, to serve until the annual meeting in December.

Among the first actions of the new board was the initiation of the popular field trips, which have been made regularly to Washington, D.C. for research there, as well as to Annapolis and Philadelphia. The board also decided to publish a journal in addition to the bi-monthly newsletter, two volumes of which had been published in 1978 and 1979 with the assistance of Historical Society staff. With the newly self-supporting society now completely responsible for its newsletter, a new series was begun with the July 1979 issue as Volume 1, No. 1.

Starting with 40 paid members late in 1978, the Society now has over 200 members, an active program of meetings, workshops and field trips, and committees active in research, preservation and publication of Delaware genealogical material.

## THE STORY OF NEWARK UNION

New Worke and Newark Friends Meeting  
and its adjoining graveyard from 1682 to 1979, and  
Newark Union, built in 1945

Anne Morris Mertz

There is a roadside marker which the public drives by and seldom reads. It is just a few miles north of Wilmington.

There is a little church and graveyard behind Normandy Manor, across the way from Shellburne, barely seen from a road which is now called Baynard Boulevard (but used to be "Carr Road" because it passed in front of the old "Carr Mansion"). Some interesting history is connected with this little church and cemetery.

The building is simple, not particularly quaint, and a date shows above the doorway—1846. So this small structure is now 133 years old. The burial ground beside it has a few modern graves, and many more old markers bearing familiar names like Sharpley, Weldin, Talley, Grubb, and Carr with old but visible dates. There are some stones which are so ancient that the dates have weathered away, and their names are not longer discernable. A fieldstone wall surrounds this burial ground. What is the story behind the wall? . . . these old graves? . . . the pre-Civil War church?

William Penn came to America in 1682. On another ship, a few months later in the same year, came his close Quaker friend, Valentine Hollingsworth, with his second wife and family. They and their shipmates had already migrated from England to Ireland, having endured religious persecution, sufferings, and some imprisonment. They were gaunt and tired and found a county so rocky that Penn called this area "My manor of Rocklands."

Penn made one of his largest grants, 986 acres in all, to Hollingsworth and his two grown sons Henry and Thomas, who were each to have 200 acres of the parcel. Valentine's grant was bounded on the east by Shellpot Creek, on the north by the present Wilson Road, to the south at about the present line of the Baltimore and Ohio Railroad tracks, and on the west beyond the present Concord Pike. Hollingsworth settled on the most easterly part of his 586 acres and built his house close to Shellpot Creek. He called his land "New Worke" He very probably came from the Parish of Work near Chesire, England. Hollingsworth Manor, built in 1022, still stands. The word has changed in written records over the years to New Wark, New Ark, and Newark. There seems to be no connection with the town of Newark, Delaware southwest of Wilmington.

Valentine Hollingsworth was the leader of a little band of colonist—Friends seeking God, not gold, and a right to worship in a way which had been denied them. With his guidance a Friends Meeting was held in the town of New Castle, allowed by Philadelphia Quarterly Meeting in 1684. New Castle was quite some

distance, in those days, from his home. This lasted only a few years, its date of beginning being unknown. A branch Meeting was established in 1685 at Valentine Hollingsworth's home, having been allowed by the Chester Quarterly Meeting. Mention of the establishment of a branch in this Newark locality appears in the minutes of a Meeting held at the Widow Welsh's in 1687. It was decided then that "the men's Meeting . . . be kept twice on ye other side of Brandywine and ye third Quarterly Meeting at New Castle."

To understand this story one should know a bit about the general organization of the early Friends who chose not to use the word "church" because of its authoritarian origins but preferred to use "Meeting". They held Meetings for worship — regular and occasional, public and private. There were usually twice-a-week or weekly Meetings. In addition, the Monthly, or Executive, Meeting acted as the administrative body, held property titles and administered funds. These Monthly Meetings reported to Quarterly and Half-Yearly Meetings which included a greater territory. These in turn reported to the Yearly Meetings, including a still larger area, and comprising all the above Meetings. A Meeting was "set up" when an assembly was given permission by an established Meeting and was "laid down" or "razed" by similar permission.

New Castle Meeting was finally laid down, for soon after the Newark Meeting was established it superseded New Castle in authority and became the first *Monthly* Meeting in Delaware. It was eventually the founder of many other Meetings which still teach the Quaker faith. These include Centre, Stanton, formerly White Clay Creek, New Garden, Malborough, London Grove, Bradford, Nottingham (or Brick Meeting House), Hockessin, Wilmington, Unionville, Georges Creek, and Dutch Creek.

Although usually held in Hollingsworth's home, the Meetings were sometimes held at Morgan Dewit's. He came to America five years before Penn and lived in New Jersey and then in Marcus Hook. Dewit was a member of Pennsylvania's first jury.

The first reference to building a meeting House in "New Work" was on September 9, 1699 when Valentine Hollingsworth and his son-in-law and neighbor George Robinson proposed their intention to build two Meeting houses, one on each side of the Brandywine, one at New Work ". . . ye place for ye other to be left for ye friends to consider". For several years members contemplated moving because they had not received confirmation to their lands, so it was a few years before Newark Friends renewed their request on June 6, 1704. They were given consent to build two Meeting houses.

A settlement was growing near what is now Centreville. Thomas Hollingsworth, Valentine's second son, sold his 200-acre grant which he called "Liftwood" to Jacob Weldin for sixty pounds, about \$300, and moved to the west side of the Brandywine. He, like his brother and father, was a member of the Provincial Assembly. William Dixon, William Gregg and others settled at Centre but attended Newark Meeting. In 1689 George Harlan had petitioned and

received permission to have the Meetings that winter at his house due to the danger of the ford. In 1690 the request was made to be at Centre constantly and was apparently granted in 1704.

On the north side of the Brandywine at "New Work" in 1704 a small structure was built of poplar logs, 130 yards from Valentine Hollingsworth's house, which stood seventy yards east of the present stone dwelling.

The influence of Newark Meeting was not restricted to religious affairs. Its members took an active part in early assemblies which laid the basis of our present Pennsylvania and Delaware laws. No complete list of those attending Newark is known, yet of those known, in a space of twenty years, thirteen were members of assemblies under Penn's government. Valentine Hollingsworth was a member for six sessions. Cornelius Empson and Edward Blake for five sessions, William Stockdale, Morgan Dewit, George Harlan, Edward Gibbs, Henry Hollingsworth, George Hogg, John Richardson, Thomas Pierson, John Musgrave and Samuel Hollingsworth each for one session.

The first survey of the famous circular boundary line between Delaware and Pennsylvania was largely the work of its members. Penn in 1701 placed the task in the hands of eight men to be divided equally between Chester and New Castle Counties. Of New Castle County's allotted four, three were members of Newark Meeting, namely, Cornelius Empson and John Richardson, justices, and Thomas Pierson, surveyor. Also active in the Newark Meeting were Adam Sharpley, whose descendants still attend Wilmington Meeting, Thos. Connaway, Hollingsworth's son-in-law, and William Stockdale, writer, martyr, and great Quaker leader.

The log Meeting House was used as a Monthly Meeting only until 1707, but Weekly Meetings continued there until 1754 when they were also laid down. The Monthly Meeting was removed to Centreville though it kept the name of Newark until 1760 when it was changed to Kennett Monthly Meeting.

According to Delaware historian Thomas Scharf, it is believed that the actual log church was removed to Centreville in Christiana Hundred and served as an outbuilding. This is legend and seems questionable since logs were plentiful, unless sentiment might have influenced the decision.

So from about 1754 until the middle 1800's, for almost a hundred years, only a graveyard remained in this place where a log Meeting had once stood. By this time most of the Friends were deceased or had moved elsewhere. The neighboring farmers were Methodists who began to agitate for a neighborhood church. In 1845 a fund was subscribed for the purpose of erecting one. Subscribers secured from the Legislature an Act of Incorporation by the name of "Newark Union". This gave control of the burial ground and the authority to erect a free public meeting house for the purpose of funeral services and divine worship, for the use of all persons of the vicinity of whatever Christian form of worship or denomination they may be. The thirty by forty foot new meeting house, built by the liberality of the neighborhood, was staked out on August 2, 1845, and dedicated on January 4,

1846, according to the minute book. Active in this work was Thomas Babb, George W. Weldin, John Beeson, Henry Beeson, Edward Beeson, George Miller, Thomas Cartwell, and others.

A shed built along the wall housed the horses and buggies, and a big pot belly stove right in the center of the room provided heat. Later an oil burner was installed under the floor, but there has never been running water.

The little one room church was outgrown in forty years and by 1951 land was purchased on the Concord Pike and the much larger Aldersgate Methodist Church was built, on the land once owned by old Adam Sharpley, the Friend.

Then the 1846 Newark Union building stood empty for about six years. In February of 1967 Pastor Fred Whitman of lower Delaware felt a call to establish an independent, fundamental, non-demoninational church here since there was none in the northern part of Delaware. Finding the empty one-room building available for one dollar a year and the permission of the Incorporated Board, he established Newark Union Church. By 1960 the membership was able to purchase adjacent land from the Newark Union Corporation and ten years later in November of 1970 a new church which seats about 180 was completed and opened. Finding their name Newark and their address Baynard Boulevard both misleading, the membership in 1964 changed the name and address to Shellburne Bible Church, at No. 4 Newark Union Public Road, which is perpendicular to Baynard Blvd., only a couple of blocks long, and leads up to the old Newark Union Church and cemetery. George Wiggs of West Chester is the present pastor of a small band of about twenty-five officially active members, although more are on the roll and attend. Mr. Daniel P. Higley of Wilmington is a Deacon and Treasurer.

So once again the old Newark Union building stands empty, abandoned and in disrepair.

Very close by this simple 133-year-old church is a graveyard whose story reaches much further back into colonial times, back even before the 1704 log Meeting of the Friends. The record of burials at Newark Meeting shows that there were four persons buried at "Newark" by 1687, five years after Hollingsworth's arrival in America. They were his son Enoch, a daughter-in-law Margaret, wife of Thomas Hollingsworth; Adam Sharpley's daughter Rachel, wife of surveyor Thomas Pierson; and a friend, Robert Vance.

The following year, 1688, Valentine Hollingsworth donated this burial ground on his land to the Meeting. Entered in the minute book was "Valentine Hollingsworth hath freely given unto friends for a burying place half an acre of land for ye purpose there being some already buried in ye spot. Friends have deferred fencing till ye next meeting." There seems to be no record of when it was walled.

Although Valentine Hollingsworth donated the burial ground, no deed appears, so later when the Newark Meeting was laid down the land became



known as "Newark free burying ground." This continued, though it was neglected after the Revolution.

Near the entrance of the stone wall is a stone in the wall "C.R. 1787." This must have been cared by Valentine Hollingsworth's great grandson Charles Robinson who now owned and lived on his great-grandfather's land beside the old graveyard. He scratched his initials on the stone when he was forty-six years of age, indicating that he might have built but probably restored the wall.

After the neighborhood Methodists built themselves the one room church "Newark Union" in 1846, the adjacent graveyard flourished and grew. The burial ground was enlarged in 1897, by the purchase of an additional acre (Deed Record N-17-96). In 1905 it was incorporated and there were then seven members of the Board of Directors to administer it.

Most unfortunately, all the old church and graveyard records were burned in 1923 when the custodian's house burned down. One story has it that a man was fired and deliberately burned the records for spite.

Valentine Hollingsworth died subsequent to 1710 but his grave is not marked or recorded, nor that of his wife. In 1935 a very large monument was erected to him and his second wife, Ann Calvert, who are both buried there, by contributions from the descendants of Valentine Hollingsworth, of whom four thousand were then on record. A committee of five Pennsylvania and Delaware Hollingsworth's organized this and a ceremony took place with talks by Ralph Gawthrop and Edward W. Cooch, both Hollingsworth descendants.

In the 1950's, when Laurence Talley was Treasurer, the trustees purchased a good bit more land reaching to the present Welshire, but later sold some of it off, which monies fortunately now provide operating costs.

Today the Newark Union Corporation is comprised of only five trustees, is voluntary, and self-perpetuating. The president is Mr. J. Atwood Weldin; the treasurer, Mr. Joseph Fisher; and Messrs. George Graff and Willis Weldin, and Mrs. Jenny Lee Hall the other members. Recent past trustees were the deceased Edward Tally and Carlisle Simon.

Burials still occur in this old cemetery, though infrequently—perhaps one or two a year. To be buried there one must already have previous family resting there with a space available. Previous arrangements may not be made before a death occurs. However, any resident of Brandywine Hundred may have free burial there if a deceased's family gets permission from the trustees, and pays a fee for perpetual maintenance.

A 1978 project for the Delaware Genealogical Society was to list and locate the graves in the old cemetery for publication by the Society. A group of members under the leadership of Mr. and Mrs. A.G. Sparks undertook this difficult task and have now listed and charted over five hundred graves; some of the oldest stones could not be read, even using the wet-sand method. This list and chart will be a valuable tool for future research and historians.

Today this little church building between Shellburne and Welshire is 133 years old, but on the same site was a log meeting that preceded it by 142 years. The graveyard precedes them both by another 17 years, and the land on which they are located was a Penn grant of 1682. The meticulous records kept by the Friends in those early times make it possible to trace the story of Newark Union in Northern Delaware.

## BIBLIOGRAPHY

Cooch, Edward W., *Delaware Historic Events*, Cooch's Bridge, Del.: 1946.

Scharf, J. Thomas, *History of Delaware*, Philadelphia: L.J. Richards and Co., 1888.

Stern, Cyrus, *Our Kindred: The McFarlan and Stern Families of Chester County, Pa. and New Castle County, Del.*, West Chester, Pa.: Hickman, 1885.

The Wilmington Monthly Meeting of Friends, *Friends of Wilmington 1738-1938*, Wilmington, Del.: The Meeting, 1938.

Conversations with:

Mr. James Frorer, active member of Wilmington Friends in 1957,

Mr. J. Atwood Weldin, president, and Mr. Joseph Fisher, treasurer of the Newark Union Corporation in 1979,

Mr. Daniel P. Higley, deacon and treasurer of the Shellburne Bible Church in 1979.

# New Castle County Licenses To Import And Export Slaves Issued by Superior Court Compiled by Mary Fallon Richards

Originals at the Hall of Records, Dover, Delaware, mostly chronological, unpagged.

These licenses were issued in compliance with an Act of the General Assembly passed February 4th, 1829, "That the Supreme Court, or court of common pleas, shall have power to grant licenses to the owner or owners of any negro or mulatto slave, to export the same to the State of Maryland or to bring the same into the state therefrom, upon such conditions, as may be deemed proper, etc., ...such negro or mulatto slave shall not thereby be entitled to his or her freedom."

A Supplement to the act, passed February 5th, 1833, permitted "the Chief Justice, or any Associate Judge of this State, upon petition to him in vacation (recess), within the county in which he resides, etc." to grant licenses, and to include the right of Delawareans who owned land in Maryland to pass and repass slaves across the border to work that land.

Master Location Description	Slave Description Status	From/To	Date	Other Data Given
Blaney, Cornelius D. and Booth, James, Exec'rs. of Alexander P. Darragh, dec'd, all of the Town of New Castle	Randall, mulatto boy, c 13 yrs. Mto be free at ae 28 yrs.	Del. to Pa.	9 May 1832	Sold to John Farr Of Philadelphia as a house servant or waiter.
Boies, Jeremiah S.H. near Wilmington	Rebecca Negro woman	Del. to Md. to service of Georg B. Burroughs Hartford Co.	30 Mar 1847	"so refractory in her conduct as to render a residence under his roof dangerous to his property and the safety of his family" License issued on condition that she serve "as cook and house servant in his family, and for no other purpose whatsoever" and "shall not be exported to any other Southern State or to any Southwestern State."
Booth, James (see Blaney)	Hannah Hall Negro female c 20 yrs. loose agreement to be free at ae 28 or 30 yrs.	Del. to Md. "not to be thence exported to any of the Southern States"	27 Jan 1840	Purchased of William Polk of Cantwell's Bridge, N.C. Co., 1836. "destitute of honesty and moral principles; disobedient and intractable."
Booth, William of New Castle Hd.	Polly Frisby Negro girl ae 5 yrs., 6mos. to serve until ae 35.	Md. to Del. "as domestic servant only"	15 June 1847	Purchased of Davidson D. Pierce of Cecil Co., Md.
Boulden, James of Pencader Hd.				

Master Location Description	Slave Description Status	From/To	Date	Other Data Given
Brindley, James J. of Christiana Hd., became owner of certain slaves-- "on 16 Feb 1821, did MM all--Hannah at ae 32, males at ae 30, females at ae 25."	Jim, Negro boy Hannah, " woman Ann, " girl Betty, mulatto girl ---, an infant child of sd.Han. Sam, Negro boy	Sam sold to Pa. for unexpired term of service	23 Nov 1832	Sam--absconded from the service of his Master and a fugitive from labour now residing in Pa."
Clayton, Joshua of St. Georges Hd.	Amelia Jackson, Negro	Md. to Del.	20 Oct 1854	
Cleland, Elizabeth of New Castle Hd.	Peter Bostic Negro, c 20 yrs a slave for life	Del. to Md.	10 Mar 1838	"absconded, insolent; has threatened life, stolen--been imprisoned".
Cochran, John P.	Caroline Hinson Negro Woman, c 19, slave for life, and her male child, also a slave for life, George Washington Smith, c 3 mos.	Md. to Del. "only as a domestic servant in his own family".	12 Feb 1847	Purchased of Jacob C. Howard of Elkton, Cecil Co., Md.
Cochran, William R., of St. Georges Hd.	Harriet Ann Piner, Negro, and her infant child, 10 mos. old.	Md. to Del.	5 Mar 1861	
Colesberry, Isaac G.	George Bayard, Negro, MM to be free at ae 28 yrs. born 7 Sept 1821	Del. to Phila., pa., as waiter and house servant.		
Crawford, William H.	John Grinnage, c 19 yrs., slave for life, mulatto boy	Del. to Md., "on condition that he may not be thence exported to any Southern State".	17 Jan 1841	Purchased of William F. Corbit. "frequent larcenies, etc.; ferocious and develish; in jail"

Master Location Description	Slave Description Status	From/To	Date	Other Data Given
Deputy, John L. of Red Lion Hd.	Grace Nathan Negro female MM to 1840	Del. to _____	23 May 1836	Accused of theft, arson; confined.
Downing, Jared N., of New Jersey, husband of Rebecca Haman, widow of Edward Haman, dec'd, who purchased slave of James Smith, 27 June 1838.	Rachael Bayard, Negro female, MM to be free at ae 21	Del. to N.J. "as a house servant and for no other purpose whatsoever, to be free 15 Sept 1855, at ae 21".	11 Oct 1850	
Eliason, John A.	Ann Wilkins, c 50, Negro woman, slave for life, and Ann Elizabeth Adams, c 3, Negro female child.	Md. to Del., "as domestic servants in family, or otherwise".	21 Mar 1848	Purchased of Dr. John Frazier, Kent Co., Md.
Eves, Abraham, of New Castle Hd., near Town of New Castle.	Phillis, c 22 yrs. Negro female, slave for life, and Betsey Peters ac 13 yrs., 5 mos. and 19 days, "a slave until 11 Sept 1844, when she will be free". mulatto	Del. to "any other state, because of constant danger and alarm".	2 Mar 1837	Accused of poisoning family with gympsun weed in coffee; imprisoned.
Foard, Josiah S. of Cecil Co., Md.	Sewall Hall, mulatto, c 22, slave for life	Md. to Del. "rented" (?) to Samuel Miller of New Castle Co., "for a term agreed upon".	16 Dec 1850	
Ginn, Sarah E. of New Castle Hd.	Andrew Comegys Negro	Md. to Del. "as a labourer"	1 Oct 1836	From late husband, Samuel Ginn, dec'd, who lived and died in Md.

Master Location Description	Slave Description Status	From/To	Date	Other Data Given
Gordon, John	Andrew Negro boy Slave for life	Export from De.	25 July 1836	"vicious and corrupt" conduct- confined in Wilmington.
Gray, Andrew	Camillus Peter Negroes	Export from De.	6 May 1833	Runaways, now in jail, expense and uncertainty of further usefulness reason for request.
Handy, Thomas W. of White Clay Creek Hd.	Toney, c 12 yrs Negro male a slave for life	De. to Ky.	5 July 1847	"gift to his daughter, Charlotte K. Graves, wife of Luke Graves of Paduca, Ky.
Hibberton, Robert of Philadelphia, Pa.	Phillip Till, 12 Negro male MM to be free 14 Jan 1848	De. to Phila. Pa. for term of nine years	15 Jan 1839	Purchased of Mary Naudain of New Castle Co.
Hopper, Samuel	Nelson Irons Negro man, slave until 2 Oct 1853, at ae 28	De. to Md. for 3yrs., 11 mos.	2 Dec 1848	"notorious bad character, utterly worthless to petitioner" received 39 lashes for stealing. Samuel Hopper to pay prison fees and costs, also to pay to George S. Hagany, owner of the property stolen, \$3.
Hurlock, William J.	Jenny, Negro	Md. to De.	6 Aug 1861	
Jefferis, James B. Brandywine Hd.	Major Gillis, "dark colored, large man, about six feet high" c 60 yrs.	Md. to De.	24 Dec 1851	Purchased of Dr. Gillis of Dorchester Co., Md.
Jenness, David	Charlotte Brown c 26 yrs. Negro	Md. to De.	11 May 1852	Hired to Mary E. Brookings of Cecil Co., Md. for some years, and she, the said Mrs. Brookings, being about to remove into this state, Jenness seeks license to import slave into state.
		To be continued		

## Newark Union Cemetery

### Brandywine Hundred, New Castle County Delaware

Caroline M. Sparks, Chairman  
Cemetery Committee

The Newark Union Cemetery is located opposite the development of Shelburne on Newark Union Road, off Baynard Boulevard, sometimes also called Carr Road—both names used in the summer 1978. There is an historical marker on Baynard Boulevard at the entrance to Newark Union Road. The cemetery is between the developments of Welshire and Normandy Manor under the water tower. The cemetery is beautifully maintained.

The original records of the cemetery were lost or destroyed in 1923. The directors now have an owners' map for the new section of the cemetery starting at that time.

The stones were read by the new Delaware Genealogical Society's Cemetery Committee in June and October, 1978 and then compiled by Caroline Sparks, Chairman, and copies placed in the Historical Society Library.

In the winter of 1979, it was discovered that there was an existing listing of graves of the Newark Union Cemetery in the Tatnall Tombstone Record book at the Delaware Archives in Dover. These records were checked against the new listings and then every discrepancy checked with the stones. Several stones are no longer there, and the people who read the stones for Mr. Tatnall in the 1930s and our committee made errors. We are now presenting the best account of both records and the reading of the stones that can be acquired.

Numbers in the right hand column of the lists, under N and W, represent approximate distances in feet from the South and East walls respectively.

			N	W
Addicks, Ida Carr Wilson wife of Joseph Bernard Wilson	d 26 June 1931			192-148
Almond, John	d 19 May 1867	b 12 June 1788		168-27
Almond, William S. son of John & Mary Ann	d 26 July 1821	b 28 March 1821		105-30
Allmond, John T.	d 13 May 1891	b 26 June 1828		170-27
Allmond, Mary Ann (Shep- herd) wife of John Almond	d 29 Aug 1863	b 15 Oct 1794		165-27
Allmond, Mary Ann	d 22 Jan 1897	b 8 Oct 1825		170-27
Anderson, David P.	d 30 Sept 1838	aged 3 years		166-157
Anderson, Isaac J.	d 23 Nov 1852	6 yrs 9 mos		14½-104

Archer, George W.	d 30 May 1847	aged 28 yrs 8 mo	52-49
Armstrong, William	d 19 Mar 1829	33 yrs	22-70
Babb, Sarah, wife of Thomas dau of Jos. & Margaret Bishop	d 17 Feb 1807	aged 76 yrs 8 mos 23 das	65-14
Babb, Thomas son of Peter and Mary	d 26 Nov 1788	aged 59 yrs 15 das	62-14
Babb, Thomas	d 16 Oct 1844	aged 76 yrs	59-14
Baker, Margaret Hall Wilson wife of Frederic Wallace Baker	d 1953	b 1873	176-157
Baker, Mary wife of William	d 23 Nov 1876	b 25 Jan 1817	23-166
Baker, Frederic Wallace Lt. USN	d 1932	b 1870	176-157
Beeson, Ann	d 30 July 1900	b 25 Apr 1817	145½-74
Beeson, Anna dau of Edward and Leah	d 26 Jan 1940	b 10 Nov 1849	128½-74
Beeson, Annie dau of John S. & Beulah A.	d 25 Sept 1875	b 3 Jan 1859	26-33
Beeson, Beulah Ann wife of John S.	d 18 Apr 1868	b 4 Jan 1824	37-33
Beeson, David H.	d 5 June 1904	b 6 Mar 1821	124-74
Beeson, Edward	d 12 Sept 1883	b 2 Sept 1812	155-74
Beeson, Edward	d 30 Mar 1852	aged 71 yrs 11 mos 3 das	138½-74
Beeson, Jane dau of Edward & Leah	d 17 June 1928	b 22 Sept 1844	132-74
Beeson, John Sr.	d 2 Dec 1858	aged 86 yrs	152-74
Beeson, John (Jr.)	d 6 Jan 1876	b 31 Dec 1809	149-74
Beeson, John S.	d 30 July 1896	aged 75 yrs 6 mos 21 das	34-33



Beeson, Joseph	d 19 Aug 1832	aged 35 yrs 1 mo	45-33
Beeson, Keziah wife of Thomas, dau of Thomas & Sarah Babb	d 4 Aug 1824	aged 54 yrs 6 mos 21 das	52-33
Beeson, Lavinia	d 8 Mar 1814		56-33
Beeson, Leah	d 2 Mar 1901	b 25 Apr 1817	135½-74
Beeson, Maria	d 21 Feb 1864	b 18 Nov 1795	59-33
Beeson, Susanna G. wife of Joseph	d 12 Oct 1872	b 12 Dec 1798	42-33
Beeson, Thomas (Jr.) son of Thomas & Rebecca	d 8 May 1825	aged 57 yrs 9 mos 28 das	49-33
Beeson, Willie son of John S. & Beulah A.	d 9 July 1850	aged 2 yrs 10 mo	39-33
Bird, Joseph	d 29 Oct. 1857	in 66th year.	28-166
Bird, Rebecca wife of Joseph	d 20 Mar 1842	aged 46 yrs	30-166
Bird, William H.(enry)	d 19 Mar 1920	b 1 Aug 1840	91-99
Bird, Rebecca (Sharpley) wife of William H.	d 18 Mar 1928	b 13 Mar 1840	95-99
Bispham, Barbara Carr Graff wife of Harrison A. Bispham	d 16 Jan 1900	b 4 Feb 1864	172-157
Booth, Martha	d 1925	b 1837	191½-99
Boyd, Elizabeth, native in the Parish of Killenbegs, Co. Donegal, Ireland	d 24 Feb 1849	aged 26 yrs	218-123
Brooks, Sarah, dau of Thomas & Dinah Cartmell	d 30 June 1785	aged 69 yrs 11 mos	68-58
Bullock, Joseph W. infant son of Curtis & Mary	d 25 July 1858		210-148
Bullock, Mary, wife of Curtis, dau of _____ & Deborah B _____	d 24 Aug 1868	b 4 Oct 1830	210-148

Caldwell, James	d 5 Aug 1797	aged 19 yrs	16-180
Carr, Ann			219-155
Carr, Barbara	d 2 Apr 1879	b 16 Feb 1807	183-148
Carr, Elizabeth			82-117
Carr, Joseph	no info.		79-117
Carr, Joseph, of the parish of Alleldale, Northumberland, Eng. landed in Am. July 10, 1818	d 28 Oct 1851	b 20 Dec 1799	179-148
Carr, Joseph, son of Joseph & Barbara	d 1 Nov 1855	b 4 Mar 1829	175-148
Carr, Margaret	no info.		76-117
Carter, Ann, wife of William	d 30 July 1920	b 23 Dec 1834	219-155
Carter, M. Blanche	d 2 Feb 1879	b 20 Feb 1878	213-155
Carter, Mary E	d 29 Aug 1856	b 18 Aug 1854	215-155
Carter, William	d 7 Feb 1879	b 12 Aug 1829	211-155
Cartmell, A.	no date	aged 12 yrs	73-51
Cartmell, Ann	d 12 May 1833	aged 71 yrs	62-51
Cartmell, Dinah, wife of Thomas	d 5 Oct 1757	aged 67 yrs	62½-58
Cartmell, George	d 20 July 1849	aged 82 yrs	65-51
Cartmell, George T.	d 21 Feb 1858	b 25 Aug 1808	185-46
Cartmell, H.	no date	aged 45 yrs	60-51
Cartmell, John, son of Thomas & Margaret	d 16 Mar 1858	b 17 July 1803	168-46
Cartmell, John B., son of George and Rebecca	d 20 Mar 1867	b 30 July 1840	168-46
Cartmell, Joseph, son of Thomas & Margaret	d 16 Aug 1829	in 30th yr	171-46
Cartmell, Margaret, wife of Thomas	d 21 Dec 1844	aged 73 yrs 4 mos	162-46
Cartmell, Mary, dau of Thomas & Margaret	d 1 June 1868	b 15 May 1794	174-46

Cartmell, Rebecca Ann, wife of George T.	d 4 July 1851	in 37th yr	188-46
Cartmell, Sarah Ann, dau of Thomas & Margaret	d 22 Apr 1852	b 21 Feb 1806	165-46
Cartmell, Sarah J., wife of John B.	d 20 Dec 1902	b 17 Sept 1844	182-46
Cartmel, Thomas	d 6 Mar 1759	aged 70 yrs	59-58
Cartmell, Thomas	d 9 Feb 1838	aged 68 yrs 10 mos	159-46
Cartmell, Thomas	d (underground)	b 13 Nov 1796	179-46
Cartmil, Thomas	unreadable		51-58
Cartmil, Thomas	d 2 Apr 1804	aged 44 yrs	48-53
Carver, Esther W. wife of Joseph	d 1831	b 1792	5-33
Cleaves, George, son of George and Susan	d 1885	b 1885	220-166
Cleaves, Royal, son of George and Susan	d 1884	b 1883	220-166
Coning, children of William & Alice	unreadable		91-175
Creth, Joanna T.	d 13 Nov 1887	b 20 Oct 1800	220-56
D _____ C _____ (fieldstone)	d 1789		120-99
Davis, Elijah	d 11 May 1826	aged 70 yrs	135-88
Davis, George (listed next to Karenhappuch in Tatnall File) No stone by 1979	d 1837	b 1769	140-88
Davis, George	d 15 Mar 1866	aged 65 yrs	150½-88
Davis, Jane, wife of George	d 4 June 1874	aged 68 yrs	153-88
Davis, Karenhappuch (dates from Tatnall File) small broken stone	d 30 June 1855	b 8 Dec 1764	142-88
Davis, Mary, wife of Elijah	d 13 Aug 1850	aged 81 yrs	147-88
Davis, Mary, dau of Edward & Catherine	d 7 Feb 1838		125-88

TO BE CONTINUED

# **Tombstone Inscriptions**

## **In**

# **Asbury Methodist Episcopal Churchyard**

3rd. & Walnut Sts.  
Wilmington, Del.

Prepared by  
The Historical Records Survey  
Works Progress Administration  
1938

These records have been transcribed from the typescript report of the Historical Records Survey; no attempt has been made to correct apparent errors, whether in the inscription or the transcription, of spelling, punctuation or biblical references. Since the survey, many of the stones have been lost or moved.

The approximate location of each grave is shown by the attached sketch, the numbers on which correspond to the paragraph numbers in this list.

1. Sarah C. Dennis, Born March 19, 1845, Died Sept. 9, 1898. "In Heaven".

2. Children of Augustus and E. J. Dennis.

Our dear Annie T., Died Sept. 21, 1868 in the 4th year of her age. "With Jesus".

Our dear Lizzie E., Died Sept. 24, 1868 in the 7th year of her age. "Sweetly sleeping".

Our dear Laura, Died Sept. 23, 1868 in the 9th year of her age. "In Heaven".

Lena May, Daughter of Augustus and Elizabeth Dennis.

3. To my husband, in memory of Benjamin M. Barron who departed this life July 25, 1859 in the 56th year of his age.

"For more than 35 years he discharged with skill and fidelity the duties of a pilot on the Delaware river until at the close of life's voyage".

"Life's stormy sea in safety passed

The Pilot's weary watch is o're

The wave tossed boat is moored at last

Where tempests rise and rage no more".

Anna, Wife of Benjamin W. Barron, Born April 19, 1807, Died March 23, 1865.

4. E.A.J. Smith, Born Oct. 22, 1820, Died Oct. 23, 1877. "Gone but not forgotten".

5. In memory of William Smith who departed this life Feb. 10, 1832, Aged 77 years.

6. My Mother Sarah Smith, Born 1782, Died 1861. (Broken slab, rest indecipherable).

7. Margaret Harris, Died April 17, 1849, Aged 12 years.  
Kezia M., Daughter of John and Elizabeth Harris, Died in great peace, May 23, 1857. (Verse indecipherable).  
Elizabeth, Wife of John Harris, Died July 15, 1855, Aged 77 years.  
"Her children rise up and call her blessed,  
Her husband also and he praiseth her".  
Sacred to the memory of Catherine, Wife of John J. Harris, Born March 10, 1816, and departed this life May 27, 1851.  
Sacred to the memory of Lester A., Son of John J. and Catherine Harris, Born August 3, 1816, Died July 1, 1818.
8. Eugene, Son of George and Lydia L. Pete, Born August 9, 1852, Died March 29, 1855.
9. Mary Elizabeth, Wife of C.E. Lucas, Born May 2, 1825, Died Feb. 24, 1885.
10. Samuel B. Carter, Born April 24th. 1828, Died Jan. 8, 1860. "He walked with God".
11. Amy Du Bois, Born Aug. 16, 1822, Died Oct. 25, 1896. "At Rest".
12. Mary Sparks, Born Nov. 30, 1815, Died Jan. 10, 1896. "Her end was peace".
13. George Sparks, Died June 28th. 1868 his 80th. year.  
Susan Sparks, Died Aug. 9th. 1849, Aged 61 years.
14. Samuel Sparks, Born July 29th. 1811, Died Dec. 9th. 1852. "Thou art gone but we do not forget thee".
15. Mother, Hannah S. Griffenberg, 1822-1912.
16. Father, Wm. T. Griffenberg, 1823-1898.
17. Allen F., Wife of Thomas Titus, Born Oct. 13th. 1813, Died May 24th. 1897.
18. My Husband, Thomas Titus, Born Sept. 9th. 1808, Died Nov. 26th. 1870.  
"His pain is o'er his suffering past,  
The peaceful shore he's gained at last".
19. Eliza J., Born Oct. 7th. 1817, Died Jan. 2nd. 1818.  
Sarah Emma, Born Mar. 3rd, 1849, Died Sept. 11, 1851. Children of Read and Mary Heisler.
20. William T., Son of Levin and Priscilla Ricords, Died Nov. 9th. 1842, Aged 21 months and 23 days.
21. In memory of Mitchell Ricords who departed this life April 5th. 1815, Aged 70 years, 2 months, and 23 days.  
Esther, Wife of Mitchell Ricords, Born March 27, 1785, Died Feb. 28th. 1854.
22. My Husband, J.A. Thomas, Died Dec. 19, 1870.
23. Eleanor A. Jefferies, Wife of John C. Thomas, Died Nov. 27th. 1864, Aged 36 years. "Resting".  
Martha J. Thomas, Daughter of John C. and Eleanor A. Thomas, Died Jan. 1, 1855, Aged 3 years and 4 months.
24. Eliza, Wife of Mathew Slater, Born Dec. 8th. 1811, Died Oct. 15th. 1865. (rest indecipherable).

25. Elizabeth Welde, departed this life July 29th. 1858, Aged 60 years, 9 months, and 28 days.

“Earth has in sorrow that heaven cannot heal”.

26. In memory of Mary Elizabeth—(Indecipherable).

27. Joseph Welde, departed this life Feb. 16th. 1818, Aged 50 years, 9 months, and 16 days.

Joseph Welde, his son, Died Aug. 7th. 1851, Aged 19 years, and 1 month.

28. William Welde, Born December 13th. 1785, Died October 8th. 1855.

Rebecca, Wife of William Welde, Born May 22nd. 1792, Died Dec. 31st. 1869.

29. Matilda Fowler, Daughter of Lewis Ashton Sr., Died Oct. 20, 1861, in the 45th. year of her age. “To die again”.

30. Lewis Ashton Sen., who departed this life January 20th. 1852 in the 61st. year of his age.

“Servant of God well done,

Thy glorious warfare past

The battle fought, the race is run

And thou art crowned at last”.

31. “In fond remembrance of My beloved Husband, Rev. Robert Gerry, Born Jan. 30, 1799, Died May 9, 1856. (rest indecipherable).

32. In memory of Jane, Wife of Samuel Floyd, who departed this life Dec. 30th. A.D. 1812, Aged 61 years.

33. In memory of Samuel Floyd, who departed this life April 28th. 1858, Aged 79 years, 11 months, and 10 days.

34. Mary, Wife of Richard Williams, Died December 15th. 1867, Aged 78 years.

“Lifes cares are oe’r and here in hope,

I rest, through my Redeemer’s love,

Until He raise this body up

To share his glorious throne above”.

35. Sacred to the memory of Richard Williams, Born in Wales, May 29th. 1786, Died in Wil’m, Del., Mar 1st. 1861.

“Blessed are the dead that die in the Lord,

They rest from their Labours and their works do follow them”.

36. In memory of John Jenkins Chester, Born Jan’y. 11th. 1828, Died May 20th. 1850.

Also of Thomas Pierson Chester, Born Oct’r. 2nd. 1830, Died Feb’y. 26th. 1852.

37. In memory of Emaline Chester, Born March 21st. 1818, Died April 5th. 1829.

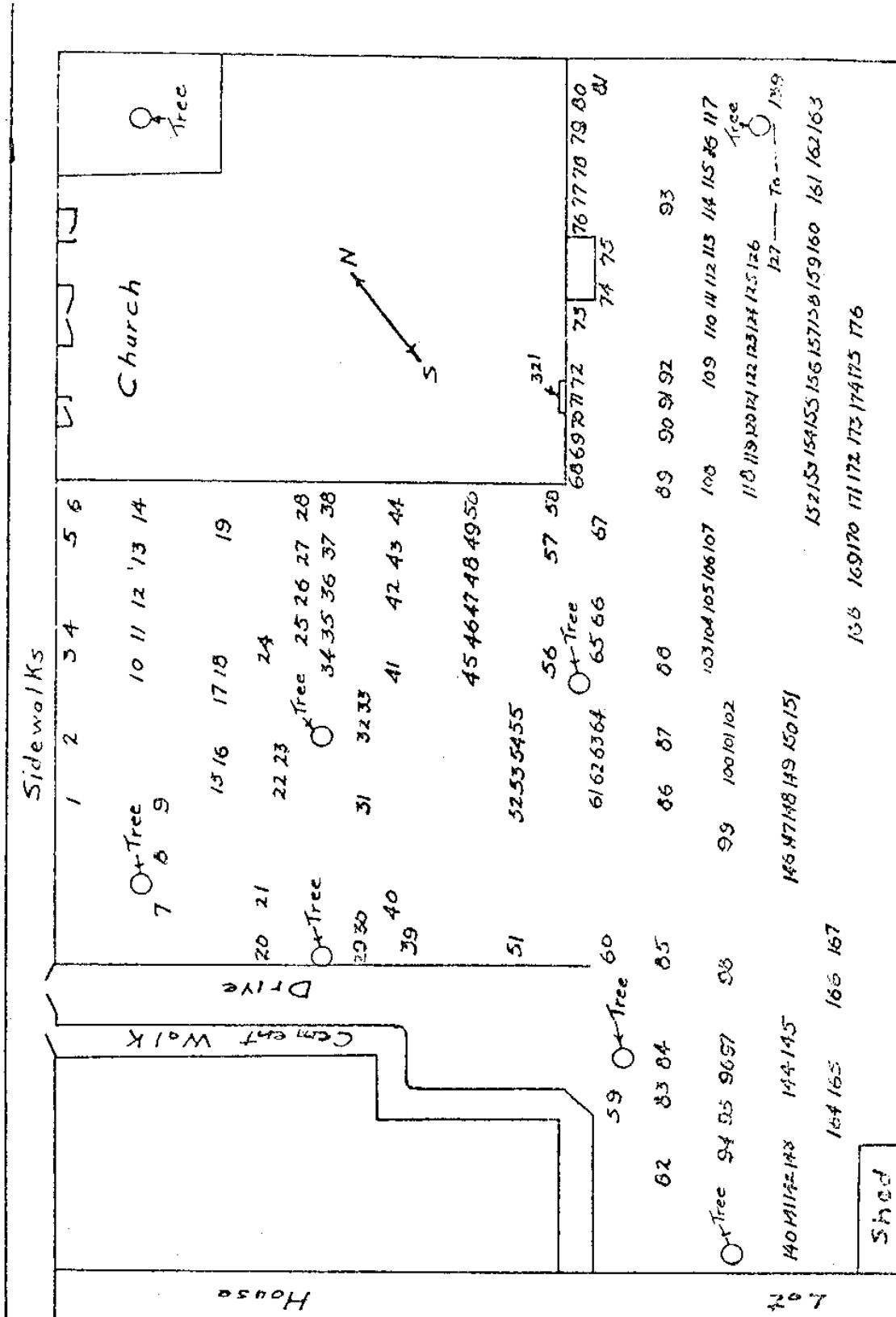
Also of the mother, Elizabeth Chester, Born Dec. 11th. 1788, Died Nov. 4, 1853.

38. Jesse Rogers, Died March 10th. 1863.

“He walked with God”.

- Ann, Wife of Jesse Rogers, Died November 21st. 1872, in her 79th. year.  
 "Blessed are the dead which die in the Lord".
39. Sacred to the memory of Rev. Solomon Prettyman, Louisville, Ky. Oct. 21, 1876 in his 80th. year.  
 (indecipherable)  
 Sarah G., Born Nov. 1802, Died Oct. 2, 1817.  
 (indecipherable)
40. Samuel K. MaGuire, Died Oct. 9th. 1862 in the 28th. year of his age.
41. Our darling Daughter, Mary Louisa.  
 (indecipherable)
42. Esther Anna, Daughter of Philip and Mary Jones, Born Jan. 10th. 1816, Died June 1st. 1819.
43. Sarah, Daughter of Philip and Mary Jones, Born August 22nd. 1820, Died April 21st. 1852.
44. Sacred to the memory of Sarah Taylor, Relict of John Taylor, Died Nov'r. 28th. 1818, Aged 68 years.  
 "She lives in Heaven".
45. Blank
46. Kate R., Daughter of Herman and Sarah Hadden, Aged 14 months. (rest indecipherable).
47. In memory of Philip Jones who departed this life January 8th. A.D. 1852 in the 42nd. year of his age. (indecipherable)
48. In memory of Mary, Wife of \_\_\_\_ (rest indecipherable).
49. Mary Jane, Daughter of Philip and Mary Jones, Born October 10th. 1818, Died October 4th. 1837.
50. Hannah C., Wife of Joseph C. Rowland and daughter of Philip and Mary Jones, Born September 21st. 1814, Died January 26th. 1848.
51. (indecipherable).
52. Mary Nicholson, Born Jan. 26th. 1789, Died Aug. 11th. 1866.
53. In memory of Benjamin Fredd, Died Aug. 12th. 1861, in the 67th. year of his age. (verse indecipherable).
54. Emeline McCombs, Daughter of Benj'n and Mary Fredd, Born Sept. 2nd. 1832, Died April 14th. 1859.  
 "My friends, I bid you all farewell,  
 My sufferings here no tongue can tell,  
 My Saviour calls, I must obey,  
 I can on earth no longer stay".
55. In memory of Mary Louisa, Daughter of Benjamin and Mary Fredd, Born May 5th. 1829, Died September 22nd. 184\_\_ (rest indecipherable).  
 (indecipherable).  
 On Jesus breast her weary head reposed  
 She fell asleep within her Saviour's arms  
 And there remains secure from death's sufferings".

WALNUT STREET



Sidewalks

Church

House

Shed

Cement Walk

Drive

N  
S

1 2 3 4 5 6  
 7 8 9  
 10 11 12 13 14  
 15 16 17 18 19  
 20 21 22 23 24  
 25 26 27 28  
 29 30 31 32 33 34 35 36 37 38  
 39 40 41 42 43 44  
 45 46 47 48 49 50  
 51 52 53 54 55  
 56 57 58  
 59 60  
 61 62 63 64 65 66 67  
 68 69 70 71 72 73 74 75  
 76 77 78 79 80  
 81  
 82 83 84 85  
 86 87 88 89 90 91 92 93  
 94 95 96 97 98 99 100 101 102  
 103 104 105 106 107 108 109 110 111 112 113 114 115 116 117  
 118 119 120 121 122 123 124 125 126 127  
 128  
 129  
 130 131 132 133 134 135 136 137 138 139 140 141 142 143 144 145  
 146 147 148 149 150 151  
 152 153 154 155 156 157 158 159 160 161 162 163  
 164 165 166 167  
 168 169 170 171 172 173 174 175 176



Shed	177 178	179 180 181 182	183	184	185	186	187	188	189	190	191	192	193	194	195	196	197	198	199	
	200	201 202 203	204 205	206 207	208	209	210	211	212	213	214	215	216	217	218	219	220	221	222	
	225 226	227 228 229 230 231	232 233	234 235	236 237	238 239 240 241 242	243	244	245	246 247	248	249	250 251	252 253 254 255	256	257 258 259 260 261	262	263 264 265 266	267	268
	269 270 271 272 273	274	275 276	277 278 279	280	281	282	283	284 285	286 287 288	289	290 291 292	293	294 295	296	297 298 299 300	301 302 303 304 305	306 307 308 309 310	311 312	313 314
	315 316 317 318 319	320																		

Wall

56. In memory of Hannah Fredd, who departed this life April 25th. 1817, Aged 64 years, 1 month and 22 day's.

(Verse indecipherable).

57. Elizabeth, Daughter of Augustus and Elizabeth Dennis, Born Jan. 16th. 185\_, Died Aug. 2nd. 185\_.

58. William A., Son of Augustus and Elizabeth Dennis, Born Oct. 11th. 1850, Died Nov. 10th. 1850.

59. —Sister—

60. In memory of John Walker, who departed this life February 17th. A.D. 1810, Aged 10 years.

Also of Elizabeth Walker, Wife of John Walker, who departed this life February 19th. A.D. 1895, Aged 31 years.

Also of their Son, John Walker, who departed this life, May 3rd. A.D. 1886, Aged 1 year.

61. Rev. John Simmons, Born January 28th. 1810, Died April 13th. 1890.

"His spirit answers to the blood and tell me I am born of God".

62. In memory of Ann M. Simmons. (rest indecipherable).

63. In memory of Mary, Wife of Joseph T. Hallowell, who departed this life Oct. 20, 1841, Aged 50 years.

(Verse indecipherable).

Elizabeth, Daughter of Joseph T. and Mary Hallowell, fell asleep June 23, 1888. Aged 70 years.

"For so He giveth His beloved sleep"

64. In memory of Joseph T. Hallowell, Died Jan. 20th. 1850, Aged 61 years.

"Blessed are the dead who die in the Lord".

65. In memory of George Simmons who departed this life Dec. 18th. A.D. 1819, Aged 57 years.

66. In memory of Hannah Simmons, Wife of George Simmons, who departed this life July 28th. A.D. 1824, Aged 53 years.

67. Sacred to the memory of Ruth Solomon, Wife of Isaac Solomon, who departed this life May 15th. A.D. 1820, Aged 45 years, 5 months.

Also of Isaac Solomon, who departed this life Sept. 1st. 1812, Aged 80 years.

68. Our Mother, Hannah M. Kennard - May 2, 1832 - Nov. 16, 1857.

69. Sacred to the memory of Alice Colesberry, who departed this life Feb. 24th. 1807, Aged 51 years and 16 days. Having survived her Husband Henry Colesberry but ten days.

70. Sacred to the memory of Henry Colesberry, who departed this life February 16th. 1807, Aged 67 years, 6 months, 17 days.

71. In memory of Elizabeth Rumsey, Wife of Benjamin Rumsey, who departed this life October 15th. 1792, Aged 24 years.

"From dark abodes of reburial light

Th'o prepared-Soul has winged her Height

On the kind bosom of Eternal light

Then let not -----? (rest indecipherable).

TO BE CONTINUED

## PATRONS

Mrs. Vernon R. Dunlap

Lucy H. Barnes

Mr. and Mrs. John Lamont West

Mr. and Mrs. Harrison N. Church

Baldwin Maull

Mrs. W. G. Crichton, Jr.

Winfield Scott Weer

Mrs. Mary E. (Appleby) Abel

Ralph W. Armstrong

Philip G. Baynard

Kathy Bogart

Dorothy L. Bowersox

Jane Gray Buchanan

Mrs. M. Woodbridge Chadwick

Juanelle M. Crump

Donn Devine

Harry A. Diehl

Miss Gertrude Bennett Draper

Josephine S. Ellsworth

Mrs. John Butz France

Carol Fricke

Rev. George W. Goodley

Nettie Evelyn Welch Goodson

Edward E. Gray

H. Elizabeth Hancock

Clifford C. Harkness

George F. Hayden

Helen A. Ingham

Mrs. Doris Jones

Edna Kanely

Mary Kupillas

Pamela Lavery

John C. Lewis

Barbara Y. McEwing

Marion O. and J. Baptist Milano

Arlene K. Miller

William H. Miller III

William B. Neal

Mrs. Elvin B. Nichols

Jerry F. Peter

Mrs. Mary Fallon Richards

Mrs. Jacqueline A. Skinner

Ms. Elizabeth J. Smith

Karen Young Talley

Mrs. C. L. Tarbutton

Robert C. Templer

Ralph F. Warner

Ruth Williams

*Mary Fallon Richards*

3 Little Leaf Court  
Wilmington, DE 19810

Genealogical Research in  
DELAWARE  
and adjoining counties of  
Maryland and Pennsylvania

The Delaware Genealogical  
Society is grateful for  
the generous support of its  
patrons and advertisers  
who have made possible  
publication of this journal